

Probation Pathways and Youth Incarceration: A Statistical Case Study of the California Juvenile Justice System

Hieu Phan¹, Emilee Liebe²

¹Ph.D., Morningside University, United States, phanj@morningside.edu

²Morningside University, United States, eal005@morningside.edu

Abstract: This data-driven case study investigates the impact of probation pathways and youth incarceration on outcomes within the California juvenile justice system. Juvenile probation outcomes are influenced by multiple factors, including race/ethnicity, age, education level, probation assignment, completion rates, and recidivism, as identified through a systematic review and analysis of juvenile justice data. Utilizing archival data from the California Department of Justice, the California Juvenile Court and Probation Statistical System (JCPSS), the California Justice Data & Investigative Bureau, and the California Criminal Justice Statistics Center, this study examines juvenile arrests, referrals, petitions, and adult court dispositions spanning 2022–2024. Building on prior research, including *Youth Behind Bars: A Data-Driven Case Study on Juvenile Incarceration in California*, this study emphasizes probation both as an intervention and as an alternative to confinement. The analysis aims to identify factors that influence probation decisions, explore strategies for minimizing unnecessary formal system involvement, and evaluate practices that effectively support youth through personal development, positive behavior change, and long-term success. Findings inform recommendations for a juvenile justice framework that prioritizes community-based probation, reduces reliance on incarceration, reinvests in rehabilitative services, and addresses systemic inequities within California’s juvenile justice system.

Keywords: Juvenile Justice, Juvenile Probation, Youth Incarceration, Probation Pathways, Recidivism, Community-Based Interventions, California Juvenile Justice System, Juvenile Offender, Juvenile Detention, Youth Correctional Facilities, Juvenile Delinquency, Juvenile Court Rehabilitation Vs. Punishment, Zero Tolerance Policies

Introduction

Recent shifts in juvenile justice policy, alternating between punitive approaches and reform, have influenced how youth are processed within the legal system. While public attention often focuses on incarceration, most juvenile outcomes are determined earlier through probation, where decisions about diversion, informal supervision, or formal court involvement occur at arrest, referral, and intake stages. Probation departments thus play a pivotal role in shaping system trajectories, with discretionary judgments either limiting or expanding justice system involvement.

Developmentally, juveniles exhibit heightened impulsivity, immaturity, and peer influence (Thompson, 2019), highlighting the importance of adult decision-making. Despite concerns about rising juvenile violence, offenses, arrests, and confinement rates have declined, emphasizing probation’s central role in managing youth engagement with the system. Using archival data from 2022–2024 from the California Department of Justice, JCPSS, the California Justice Data & Investigative Bureau, and the California

Criminal Justice Statistics Center, this study examines arrest patterns, probation referrals, formal petitions, and dispositions.

Findings show that while law enforcement generates most referrals, the majority of cases are resolved through probation actions rather than incarceration. Outcomes vary by age, gender, race/ethnicity, and offense severity, with younger adolescents more likely to be diverted and older youth advancing to formal court involvement. By focusing on early discretionary decisions, this study demonstrates how probationary pathways influence system involvement, disparities, and long-term outcomes, highlighting probation as a key intervention for promoting equitable, developmentally appropriate approaches in California's juvenile justice system.

Literature Review

Childhood Trauma, Emotional Development, and Pathways to Delinquency

Research demonstrates that early childhood trauma significantly influences emotional development and behavioral outcomes, increasing the risk of delinquency and justice system involvement. Studies of incarcerated populations (Altintas & Bilici, 2018) link abuse, neglect, and family instability to psychiatric difficulties, dissociation, and criminal behavior, indicating that offending often stems from longstanding emotional and environmental stressors. (Thompson, 2019) highlights that trauma-related emotion dysregulation—common in adolescence—can drive impulsivity, aggression, and poor decision-making, further elevating risk for antisocial behavior. These findings underscore the critical role of probation pathways, which can identify trauma-related needs, connect youth to supportive services, and potentially prevent deeper system involvement.

Considering the Effects of Juvenile Incarcerations

Research indicates that juvenile incarceration often does more harm than good, adversely affecting youths' mental health, social-emotional development, and long-term behavior (Fagan & Kupchik, 2011). Exposure to antisocial peers, interruptions in education, and weakened family and community connections can reinforce delinquent identities rather than foster rehabilitation. Even initial contact with the justice system can trigger labeling effects that increase the likelihood of continued delinquent involvement (Lieberman et al., 2014). Moreover, longer periods of confinement are linked to heightened emotional distress and elevated public health risks (Gonzalez, 2017). These findings highlight the value of alternatives such as probation, early diversion programs, and structured community supervision, which are more effective at reducing unnecessary confinement and promoting positive long-term outcomes for justice-involved youth.

Trends in Juvenile Arrests & Probation Referrals and Law Enforcement

Between 2022 and 2024, California experienced a post-pandemic rebound in juvenile arrests, with felonies and misdemeanors comprising the majority of cases and status offenses remaining minimal. Arrests rose sharply in 2022, increased more modestly in 2023, and stabilized in 2024, while the distribution of offense types remained consistent. Following arrest, approximately 92–94% of youth were referred to probation each year, though not all cases progressed beyond intake. Roughly half of probation referrals advanced to juvenile court, with about half of petitioned youth becoming wards of the court. Adult court convictions remained significant, with a slight decline in 2024.

These trends indicate that despite fluctuations in arrest volume, the structural processes of probation referral, court processing, and case outcomes remained stable,

highlighting the sustained role of law enforcement in initiating probation pathways and the predictability of court handling within California's juvenile justice system.

The Role of Diversion in Juvenile Justice

Research indicates that juvenile justice outcomes are strongly influenced by how youth are engaged. Diversion programs, when well-designed, provide skill-building, support, and accountability, allowing youth to learn from mistakes without being labeled delinquent, whereas poorly structured programs can inadvertently increase system involvement (Mears et al., 2016). (Steinberg, 2009) emphasizes the developmental basis for such interventions, noting that adolescents' ongoing maturation in impulse control, risk assessment, and decision-making makes punitive approaches potentially harmful. Programs that align with developmental needs, including targeted diversion and probation initiatives, promote better decision-making and reduce recidivism. Overall, juvenile justice interventions are most effective when they balance accountability with support, integrating adolescent developmental considerations to minimize harm and enhance long-term outcomes.

Empirical Questions

This study was guided by the following research questions:

1. How do demographic factors, including race/ethnicity, age, and gender, influence probation intake decisions and the likelihood of formal petition within the California juvenile justice system from 2022 to 2024?
2. To what extent do probation pathways—diversion, informal supervision, or formal court petition—affect recidivism rates among justice-involved youth in California?
3. What factors at the arrest and referral stages increase the probability that a youth will progress from probation supervision to confinement or adult court disposition?
4. How do offense severity and referral source shape probation outcomes and completion rates within county probation departments?
5. Do community-based probation and diversion programs reduce the use of incarceration while improving outcomes for youth?

These research questions are critical as they address key decision points that occur prior to incarceration. By analyzing demographic differences, offense characteristics, and probation pathways, the study elucidates how early system interactions can either mitigate or exacerbate youth involvement in the justice system. Investigating the effects of probation pathways on recidivism and confinement provides insight into whether current practices promote rehabilitation and developmental support. Collectively, these questions facilitate an evaluation of whether California's juvenile justice system effectively implements fair, community-based alternatives to incarceration while minimizing long-term harm to youth.

Methodology

This study uses a quantitative, nonexperimental research design based on secondary archival data from California Department of Justice reports (2022–2024). A longitudinal comparative approach was used to examine trends across a three-year period. The analysis centers on the relationships between independent variables, including demographic characteristics, offense severity, and referral outcomes, and dependent variables such as probation dispositions, petition rates, and detention status. All data were drawn from standardized tables in the California Juvenile Court and Probation Statistical System (JCPSS), and because the study relies on existing de-identified data, no direct human subject interaction was required.

Data Analysis

This study employs a quantitative archival data analysis to examine juvenile probation pathways and system outcomes in California from 2022 to 2024. The research identifies patterns across key decision points, including probation intake determinations, demographic disparities, and offense severity. Descriptive statistical techniques, such as frequency distributions and percentage analyses, were used to characterize trends in probation outcomes. Key variables include probation intake results, detention status, demographic characteristics, and offense severity. Together, these variables allow for a comprehensive assessment of the factors influencing youth engagement with the juvenile justice system.

Participant/Demographics

The dataset encompasses all juvenile cases reported in the JCPSS from 2022 through 2024. Analysis reveals persistent disparities in petition rates across racial and ethnic groups. Black youth exhibited the highest petition rates (approximately 56–57%), followed by Hispanic youth, whose rates increased over time, while White youth had lower petition rates and other racial groups remained in the mid-range (California Department of Justice, 2022–2024, Table 14). Diversion rates similarly reflected inequities, with Black youth consistently receiving diversion at lower rates (3–4%) compared to White youth (approximately 8%), indicating unequal access to alternative interventions. Age-based patterns demonstrate that youth under 12 were predominantly closed at intake, exceeding 87% across all years, whereas older adolescents, particularly those aged 15–17, were more frequently subjected to formal court processing. Informal probation was most commonly applied to youth aged 12–17 but remained limited overall, highlighting the minimal use of intermediate interventions within the system.

Design/Sampling

Across the 2022–2024 period, petition filings consistently constituted the largest case outcome, increasing from 48.1% in 2022 to 49.1% in 2023 and 52.1% in 2024 (California Department of Justice, 2022–2024, Table 14). In contrast, diversion rates declined from 7.5% in 2022 to 6.4% in 2023 and 5.5% in 2024, while informal probation remained consistently low, decreasing from 2.5% to 1.9% over the same period. Cases closed at intake were relatively stable, comprising 38.8% of cases in 2022, 39.8% in 2023, and 38.3% in 2024, indicating that a substantial portion of youth were filtered out prior to formal system involvement. Nonetheless, the rising proportion of petitions reflects an increasing reliance on formal court processing within California’s juvenile justice system.

Data Collection

The data undergirding this study were drawn from publicly available reports published by the California Department of Justice, specifically the annual *Juvenile Justice in California* reports for 2022, 2023, and 2024 (2022–2024). The foundational source for these data is the JCPSS, a statewide data infrastructure that compiles standardized information across key juvenile justice processes, encompassing arrests, referrals, probation determinations, and court dispositions. The present study focuses its analysis on two specific tables within these reports: Table 14, which details probation intake decisions alongside relevant demographic characteristics, and Table 17, which presents offense severity classifications and petition outcomes. These tables were selected because they represent pivotal decision points within the juvenile justice continuum—specifically, the junctures at which youth are either diverted from formal processing, formally petitioned, or advanced further into the system (California Department of Justice, 2022–2024, Tables 14 & 17).

Procedures

Tables 14 and 17 were selected as the primary sources for each year, as they provide detailed information on probation intake decisions, demographic characteristics, and offense severity. Key variables—including intake outcomes, race/ethnicity, age, and offense level—were systematically extracted and organized into percentages and total counts based on the reported values. Cross-year comparisons were then conducted to identify trends and patterns from 2022 through 2024. The findings were subsequently interpreted with a focus on probation pathways and their influence on juvenile justice outcomes, emphasizing how early decision points shape subsequent system involvement (California Department of Justice, 2022-2024).

Instruments

These reports are derived from the California Juvenile Court and Probation Statistical System (JCPSS), a comprehensive statewide database that tracks juvenile justice processes, including arrests, referrals, probation decisions, and court outcomes. The primary instruments for analysis were specific statistical tables within the DOJ reports, which provided quantitative data in the form of frequencies and percentages, enabling cross-year comparisons and trend analysis. No primary data collection methods, such as surveys or interviews, were employed; rather, the archival datasets functioned as the measurement tools, capturing the key variables necessary to examine probation pathways and juvenile justice outcomes.

Results

Statistical Findings

The results of this study reveal consistent patterns in probation decision-making, demographic disparities, and offense severity within the California juvenile justice system from 2022 to 2024. Petition filings were the most common outcome, increasing from 48.1% in 2022 to 49.1% in 2023 and 52.1% in 2024 (California Department of Justice, 2022–2024, Table 14). In contrast, diversion declined from 7.5% to 5.5%, and informal probation remained low, decreasing from 2.5% to 1.9%, while closed-at-intake cases remained stable at approximately 38–40%, indicating that a substantial proportion of youth were filtered out prior to deeper system involvement. Detention patterns were consistent, with roughly 27% of youth detained and the majority (approximately 73%) remaining in community-based settings (California Department of Justice, 2022–2024, Table 14). Racial and ethnic disparities were evident: Black youth consistently experienced the highest petition rates, exceeding 56%, while Hispanic youth exhibited increasing petition rates over time. White youth had comparatively lower petition rates, and Black youth were less likely to receive diversion (3–4%) than White youth (approximately 8%). Age-based differences indicated that youth under 12 were predominantly closed at intake (over 87%), whereas older adolescents, particularly those aged 15–17, were more frequently subject to formal petitioning and court involvement. Offense severity also shifted toward more serious cases, with felony-level petitions rising from 53.5% in 2022 to 57.8% in 2024, misdemeanor cases declining slightly, and status offenses remaining below 10% (California Department of Justice, 2022–2024, Table 17).

These findings indicate a gradual increase in formal system processing, stable detention practices, persistent demographic disparities, and a rise in felony-level cases, suggesting that probation pathways are increasingly channeling youth toward formal court involvement rather than diversion or informal supervision.

Presentation of Statistics

Descriptive statistics were used to examine trends in probation outcomes, detention practices, and offense severity over the three-year period. The data show a shift toward more formal processing, with petition filings rising from 48.1% in 2022 to 52.1% in 2024, while diversion declined from 7.5% to 5.5% and informal probation remained relatively unchanged. Detention patterns were stable, with about 27% of youth detained each year and 73% released. Offense severity also increased, as felony petitions grew from 53.5% to 57.8%, while misdemeanor and status offense cases declined or remained low. Overall, these findings suggest a trend toward greater formal system involvement and more serious offense profiles in California’s juvenile justice system.

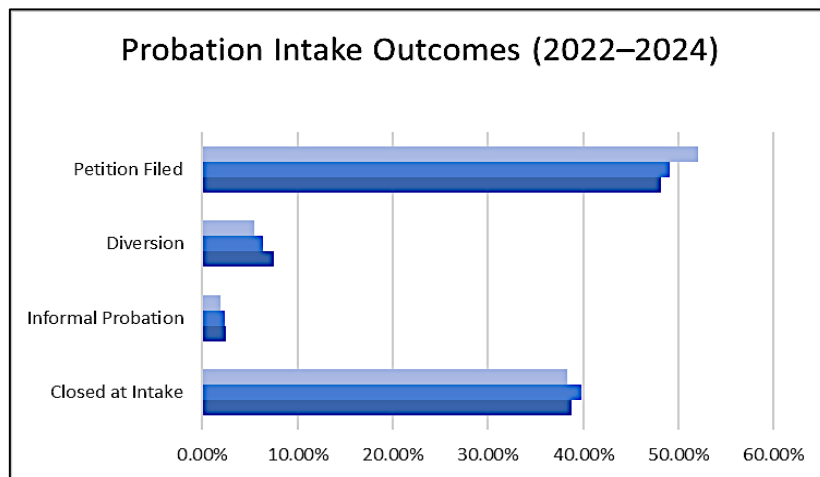


Figure 1. Probation Intake Outcomes (2022–2024)

Source: California Department of Justice (2022–2024). Tables 14 and 17

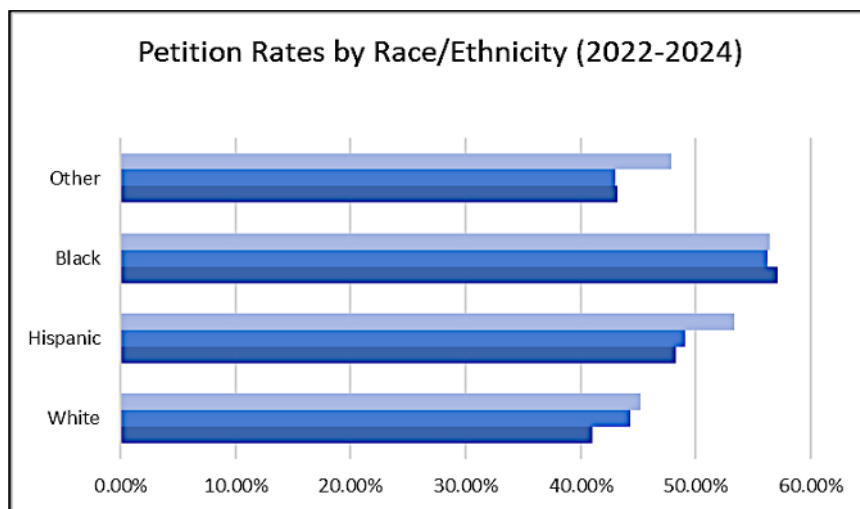


Figure 2. Petition Rates by Race/Ethnicity (2022- 2024)

Source: California Department of Justice (2022–2024). Tables 14 and 17

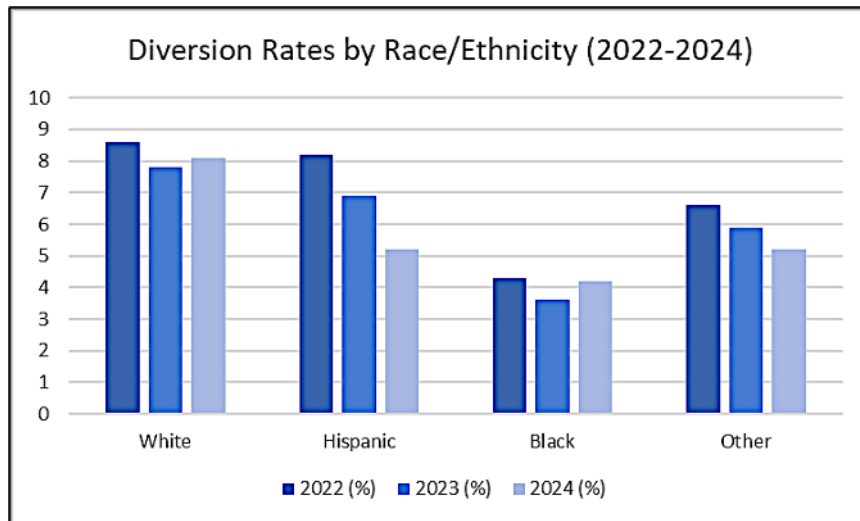


Figure 3. Diversion Rates by Race/Ethnicity (2022- 2024)

Source: California Department of Justice (2022–2024). Tables 14 and 17

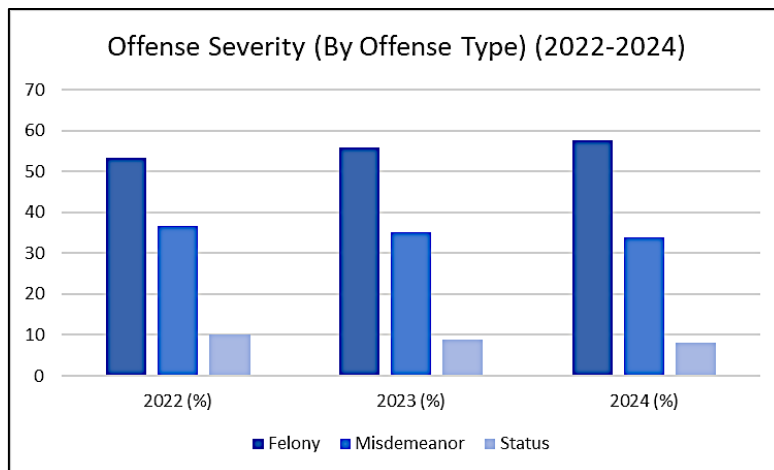


Figure 4. Offense Severity (By Offense Type) (2022-2024)

Source: California Department of Justice (2022–2024). Tables 14 and 17

Discussion/Recommendations

The findings of this study indicate a shift in the California juvenile justice system toward increased formal processing, despite policy efforts to reduce youth incarceration. From 2022 to 2024, petition filings rose steadily, diversion declined, and informal probation remained low, suggesting that probation pathways are increasingly channeling youth into formal court involvement rather than serving as alternatives.

These trends align with prior research on the risks of early system contact. Initial justice involvement can produce labeling effects that increase the likelihood of continued delinquency (Lieberman et al., 2014), and diversion programs are effective only when properly implemented (Mears et al., 2016). Racial disparities were pronounced: Black youth experienced higher petition rates and lower diversion rates compared to White youth, indicating inequitable access to alternatives and potential bias in probation intake decisions. Age patterns also reflected developmental considerations, with younger youth more likely to be diverted or closed at intake, while older adolescents faced greater formal processing, raising concerns about adequate rehabilitative support.

To address these issues, several recommendations emerge. Expanding evidence-based diversion programs, such as Functional Family Therapy (FFT) (Alexander, 2011) and Multisystemic Therapy (MST) (Henggeler, 2011), can reduce recidivism by targeting behavioral and family-related factors. Probation departments should adopt standardized decision-making frameworks to limit bias and promote equitable outcomes. Investment in community-based supervision and supportive programs, including DDAP and JARPP, can reduce detention and improve youth outcomes (National Institute of Justice, 2022) (Young, 2015). Finally, integrating trauma-informed and developmentally appropriate interventions is essential, as many justice-involved youth have experienced significant early adversity (Altintas & Bilici, 2018; Thompson, 2019).

Overall, while California has reduced reliance on incarceration, probation pathways remain central to shaping youth outcomes. Strengthening diversion, addressing disparities, and expanding rehabilitative and trauma-informed services are critical for a more equitable and effective juvenile justice system.

Conclusion and Future Scope

This study highlights the central role of probation pathways in shaping outcomes within the California juvenile justice system. Although incarceration has declined, formal processing increased between 2022 and 2024, with petition rates rising and diversion and informal probation decreasing. These trends indicate that early probation intake decisions increasingly direct youth into deeper system involvement rather than community-based alternatives. Persistent disparities were evident across race, ethnicity, and age. Black youth were disproportionately petitioned and less likely to receive diversion, while older adolescents faced higher rates of formal processing, raising concerns about the consistent application of developmentally appropriate interventions. The increase in felony-level cases further underscores a shift toward more serious offenses, contributing to greater system engagement.

The findings underscore the need to strengthen probation as a rehabilitative and preventative mechanism. Expanding evidence-based diversion programs, standardizing intake decision-making, and investing in community-based services are critical to improving outcomes and reducing unnecessary system contact. Addressing trauma, mental health needs, and family instability is also essential for promoting long-term behavioral change and reducing recidivism.

Future research should utilize longitudinal, individual-level data to assess how probation pathways influence recidivism, education, and employment outcomes. Evaluating intervention programs, particularly diversion and community-based supervision, can identify effective models, while qualitative studies of youth, probation officers, and families can provide insight into decision-making processes. Continued attention to systemic disparities at referral, intake, and petitioning is essential to foster a more equitable and developmentally informed juvenile justice system.

References

- Alexander, J. F. (2011). *Program profile: Functional family therapy (FFT)*. CrimeSolutions, National Institute of Justice. <https://crimesolutions.ojp.gov/ratedprograms/functional-family-therapy-fft>
- Altintas, M., & Bilici, M. (2018). Evaluation of childhood trauma with respect to criminal behavior, dissociative experiences, adverse family experiences and psychiatric backgrounds among prison inmate. *Comprehensive Psychiatry*, 82, 100-107. <https://doi.org/10.1016/j.comppsy.2017.12.006>
- California Department of Justice. (2022). *Juvenile Justice in California, 2022*. <https://data-openjustice.doj.ca.gov/sites/default/files/2023-06/Juvenile%20Justice%20In%20CA%202022f.pdf>
- California Department of Justice. (2023). *Juvenile Justice in California, 2023*. <https://data-openjustice.doj.ca.gov/sites/default/files/2024-07/Juvenile%20Justice%20In%20CA%202023f.pdf>

- California Department of Justice. (2024). *Juvenile Justice in California, 2024*. <https://data-openjustice.doj.ca.gov/sites/default/files/2025-07/Juvenile%20Justice%20In%20CA%202024%20final.pdf>
- Fagan, J., & Kupchik, A. (2011). *Juvenile Incarceration and the Pains of Imprisonment*. *Duke Forum for Law & Social Change*. <https://scholarship.law.duke.edu/dflsc/vol3/iss1/3/>
- Gonzalez, T. (2017). Youth incarceration, health, and length of stay. *Fordham Urban Law Journal*, 45(1), 45-82.
- Henggeler, S. W. (2011, June 16). *Program profile: Multisystemic Therapy - Substance abuse*. CrimeSolutions, National Institute of Justice. <https://crimesolutions.ojp.gov/ratedprograms/multisystemic-therapy-substance-abuse>
- Liberman, A. M., Kirk, D. S., & Kim, K. (2014, February). *Labeling Effects of First Juvenile Arrests: Secondary Deviance and Secondary Sanctioning*. Urban Institute. <https://www.urban.org/sites/default/files/publication/33701/413274-Labeling-Effects-of-First-Juvenile-Arrests-Secondary-Deviance-and-Secondary-Sanctioning.PDF>
- Mears, D. P., Kuch, J. J., Lindsey, A. M., Pesta, G. B., Greenwald, M. A., & Blomberg, T. G. (2016, August). *Juvenile Court and contemporary diversion: Helpful, harmful, or both?* U.S. Department of Justice Office of Justice Programs. <https://www.ojp.gov/library/publications/juvenile-court-and-contemporary-diversion-helpful-harmful-or-both>
- National Institute of Justice. (2022). *Program profile: Detention diversion advocacy program (DDAP)*. CrimeSolutions. <https://crimesolutions.ojp.gov/ratedprograms/detention-diversion-advocacy-program-ddap#0-0>
- Steinberg, L. (2009). Adolescent Development and Juvenile Justice. *Annual Reviews. Annual Review Clinical Psychology*, 5, 459-485. <https://doi.org/10.1146/annurev.clinpsy.032408.153603>
- Thompson, R. A. (2019). Emotion dysregulation: A theme in search of definition. *Development and Psychopathology*, 31(3), 805-815. <https://doi.org/10.1017/S0954579419000282>
- Young, D. (2015). *Program profile: Juvenile justice assessment planning referral placement (JARPP)*. CrimeSolutions, National Institute of Justice. <https://crimesolutions.ojp.gov/ratedprograms/juvenile-justice-assessment-planning-referral-placement-jarpp>